

# Astleys

JERMYN ST. LONDON



*A large  
meerschaum pipe  
depicting  
Venus and Bacchanti*





# Astleys

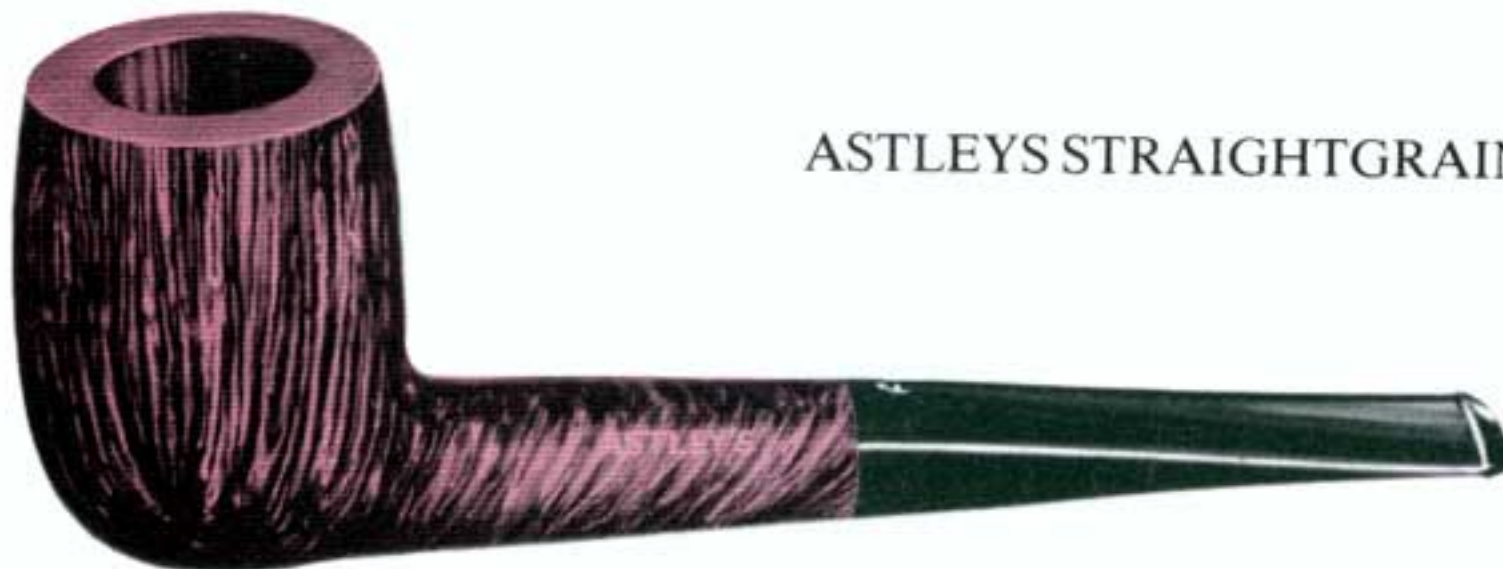
The interior of ASTLEYS – 109, Jermyn Street – the mecca of Pipe Smokers throughout the world, showing Mr. Eric Walters, a familiar figure to our many customers for over 40 years.

ASTLEYS have only the one address in JERMYN ST. from which we sell to customers world wide. In this way we feel that we can best ensure that everyone gets the top quality article upon which our name is based.

ASTLEYS celebrated its centenary in 1962 and we couple this long experience with the courtesy and considerable personal knowledge of our staff.

No enquiry goes unanswered and every endeavour is made to carry out the personal wishes of each and every client.





## ASTLEYS STRAIGHTGRAINS

These are superb quality briars with the hard and soft grains running parallel from the rim to the base of the bowl. Apart from being a real pleasure to the eye, the evenness and structure of the grain suffuses the tobacco juices evenly over the whole inner surface of the bowl thus producing a beautifully cool sweet smoke. Astleys possess a wide range of Straightgrains in varying sizes and shapes. Each Straightgrain pipe however is individual.

An Astley's Straightgrain is the most prized possession of every true pipe smoker. There are many pipes whose grains may not be straight but give excellent sweet smoking; the Straightgrain is however unique.

*Shape shown is a Medium Billiard Shape No.21 or 28 (Quality A.) When ordering give 2nd and 3rd choice, we will always send the nearest to your choice.*



## ASTLEYS BALMORAL

These are top quality Briars. Each one is a perfect pipe chosen for the fine grain and beauty of the bowl.

Only specially selected close grained root is used in the manufacture of the Astley Balmoral. The superb smoking qualities of this pipe are due to the high grade of briar root used and in considerable measure to the skill and craftsmanship which go to the making of an Astley Pipe. The mouthpiece is made from the best English vulcanite, handworked to give a comfortable grip.

*Shape shown No.72 W, available in all shapes on page 6. Please give 2nd and 3rd choice.*



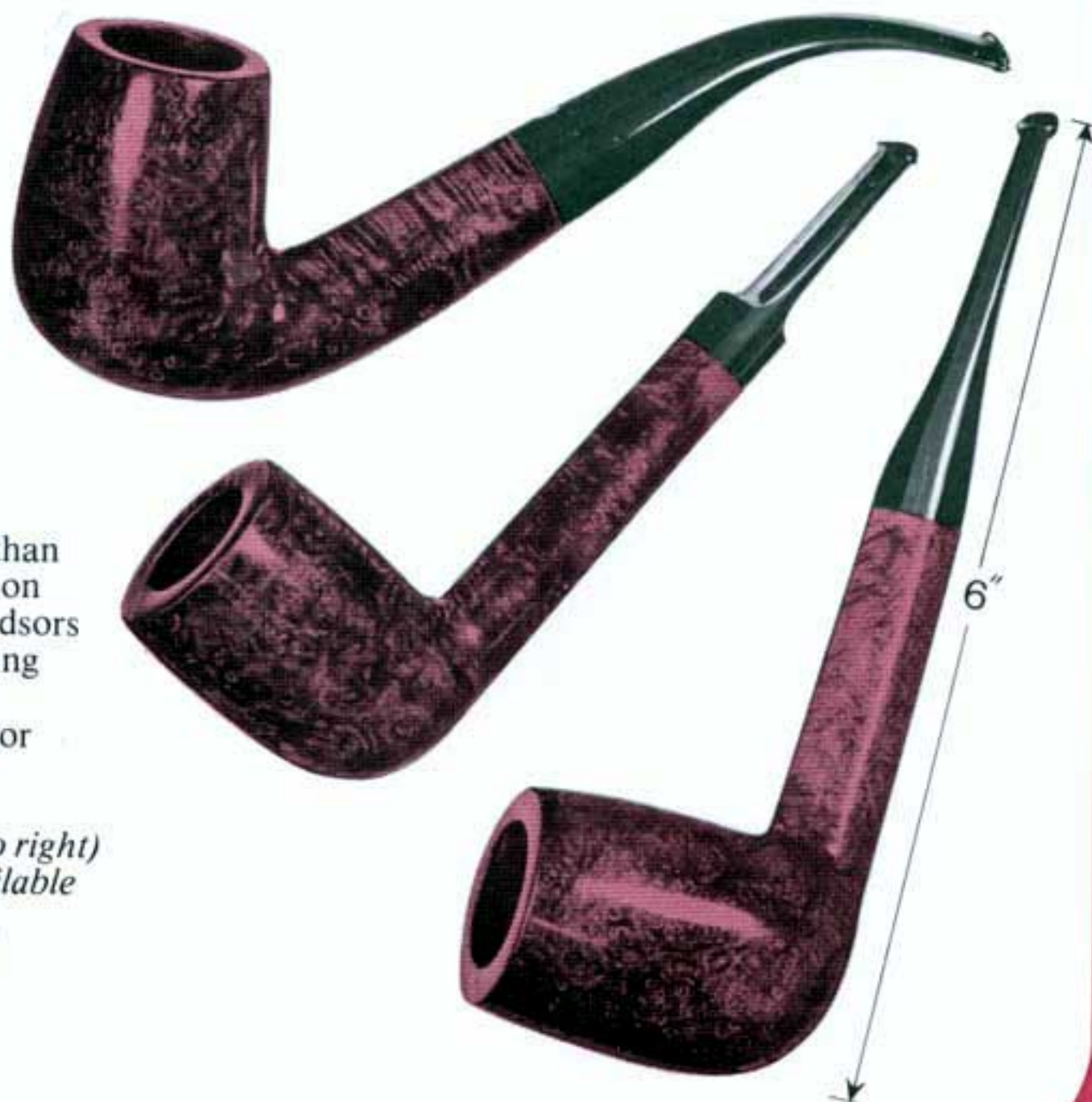
## ASTLEYS BUCKINGHAM



A fine quality pipe with fully grained bowl fitted with hand worked vulcanite mouthpiece. Its attractive colour and high finish emphasizes the individual character of each pipe.

*Shape shown No. 17 Large Rhodesian. Also available in all shapes shown on page 6.*

## ASTLEYS GIANT WINDSORS



These pipes are larger than those in our pipe chart on page 6. The Giant Windsors show superb rich glowing grains in briar and are finished either smooth or sandblasted.

*Pipes illustrated (left to right) 019, 056 072. Also available in shapes Nos. 02, 017, 069 and 067 on page 6.*



A fine quality pipe with fully grained bowl fitted with hand worked vulcanite mouthpiece. Its attractive colour and high finish emphasizes the individual character of each pipe.

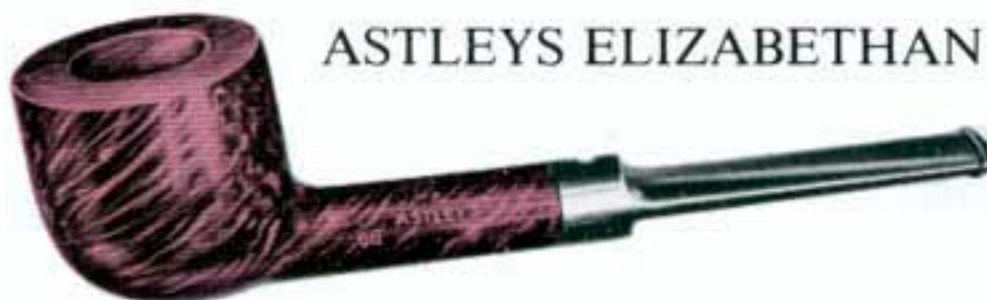
*Shape shown No. 56, Large Lovat. Also available in all shapes shown on page 6.*



ASTLEYS CONNOISSEUR

A pipe with character. A specially selected bowl of good grain. Completed in our finest walnut finish.

*Shape shown No. 68 large pot. Also available in all Shapes shown on page 6.*



ASTLEYS ELIZABETHAN

One of the most famous of the popular priced Briars. The Atlantic enjoys a world wide reputation for quality and value. A 'hard wearing pipe'.

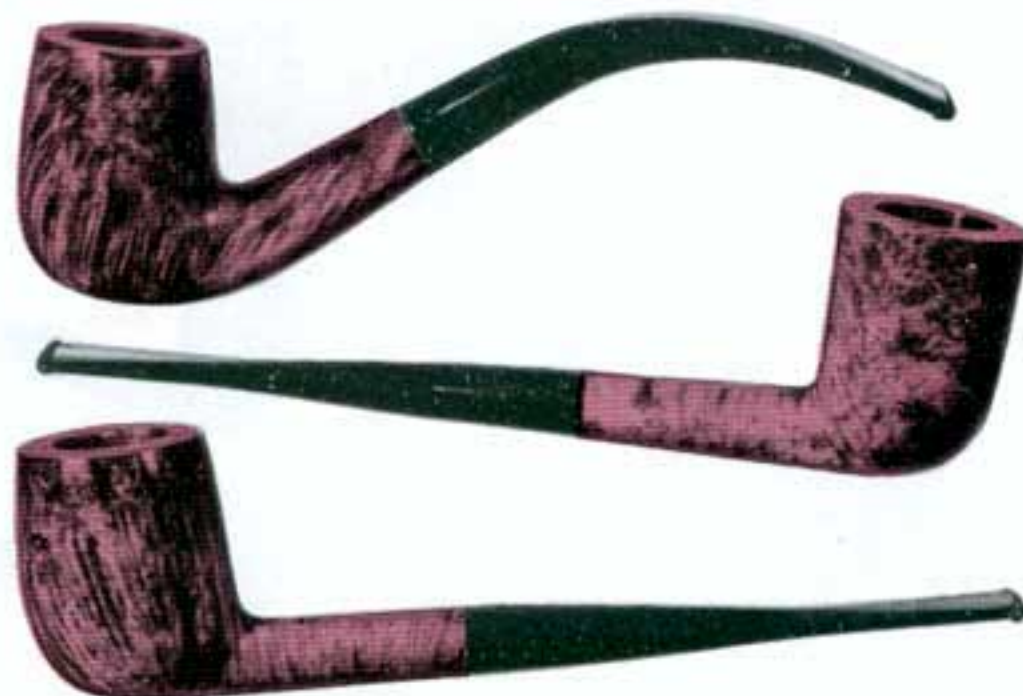
*Shape shown No. 55, Medium Zulu. Also available in all shapes shown on page 6.*



ASTLEYS ATLANTIC

## ASTLEYS LIGHTWEIGHTS

These weigh approximately  $\frac{3}{4}$  oz. Ideal for dentures because of "light weight" and thinness of mouthpiece – 15/20 minutes smoking time – instead of a cigarette! Available only in Shape Nos. 2, 13, 18 and 69 as shown on page 6.





# Astleys Pipe Chart

- \*2 *Medium Apple straight stem.*
- 3 Medium Apple slightly curved stem.
- 4 Large Apple Wafered stem.
- 10 Panelled billiard wafered stem.
- 16 Large Bulldog wafered stem.
- \*15 *Medium Bulldog.*
- 17 Large Rhodesian.
- 19 Large bent.
- \*18 *Medium bent.*
- 21 Medium billiard 2½" stem.
- \*28 *Medium billiard 3" stem.*
- 45 Large Zulu.
- \*55 *Medium Zulu.*
- \*52 *Medium Dublin 2½" stem.*
- 54 Medium Dublin 3" stem.
- 56 Large Lovat.
- \*20 *Medium Lovat.*
- 60 Calabash bent.
- 67 Large Dublin.
- 68 Large pot wafered stem.
- \*69 *Large pot 2½" stem.*
- 72 Extra large billiard.
- \*32 *Large billiard.*
- 72w Extra large billiard wafered stem.
- 75 Large Dublin Lovat.

*Items asterisked \* and in italics are available but not shown.*





## *Astleys unusual shapes*

No. 48 Round Cherrywood Briar. A copy of old English cherrywood, flat base.

No. 65 Curved Bell Dublin – large tobacco capacity, attractive appearance.

No. 217 Spinning Top. Thick wood and comfortable “hold”.

No. 24 Hungarian Bent or Oom Paul, a good pipe for reading.

No. 1974 Pointed Zulu. Slight heel. Attractive line.

No. 144H The Author, thick stem and bowl – a hard wearing pipe.

No. 90 Pear. Semi-curved. Rounded thick bowl. Sturdy stem.

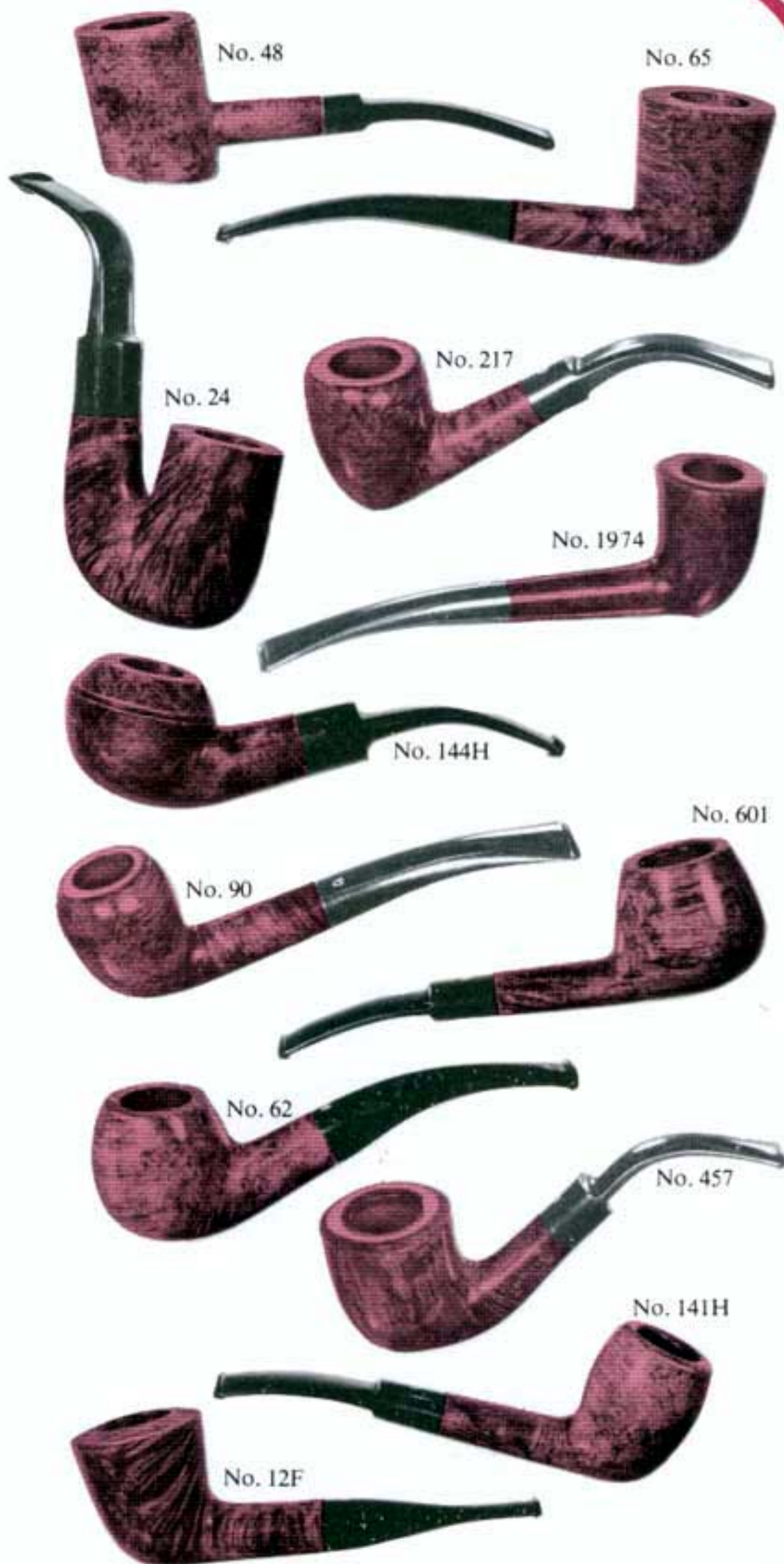
No. 601 Oval Stem Large Prince, slightly curved stem.

No. 62 Chubby Bent, well wooded bowl.

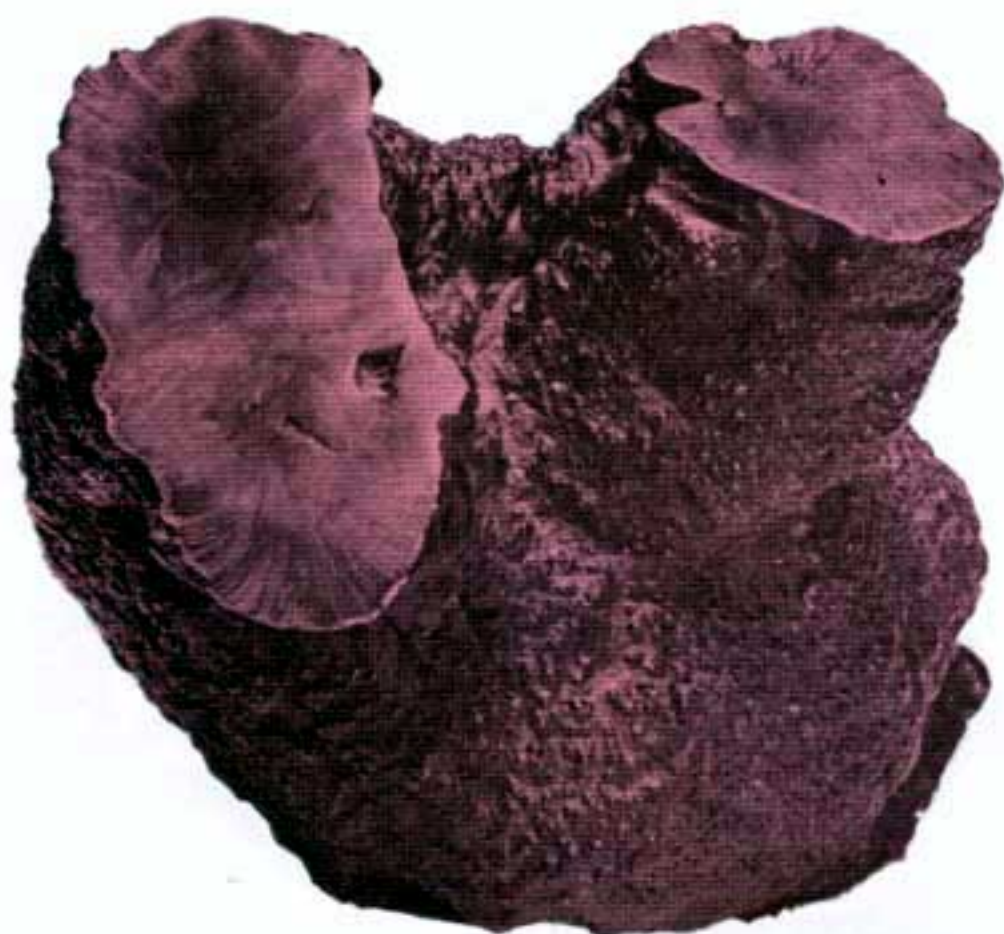
No. 457 Bent Pot. Thick and really cool. Perfect balance.

No. 141H Slightly curved Apple with oval stem.

No. 12F Domed top Chubby Dublin.







### ASTLEYS ROOT BRIARS

These pipes are made of actual Roots of Briars and are not only unique in shape but can be relied on to give a cool smoke. Each pipe is flattened underneath to rest upright on almost any surface. Only Astleys can supply these.

### ASTLEYS CRUSTY BRIARS

A specially selected quality. The individual character of each bowl is revealed by a special process, reducing the weight and enhancing the cool smoking quality of these Astley Pipes. Prices according to size (See Price List)



*Shape shown is No. 67.*

*Available in all shapes on page 6.*

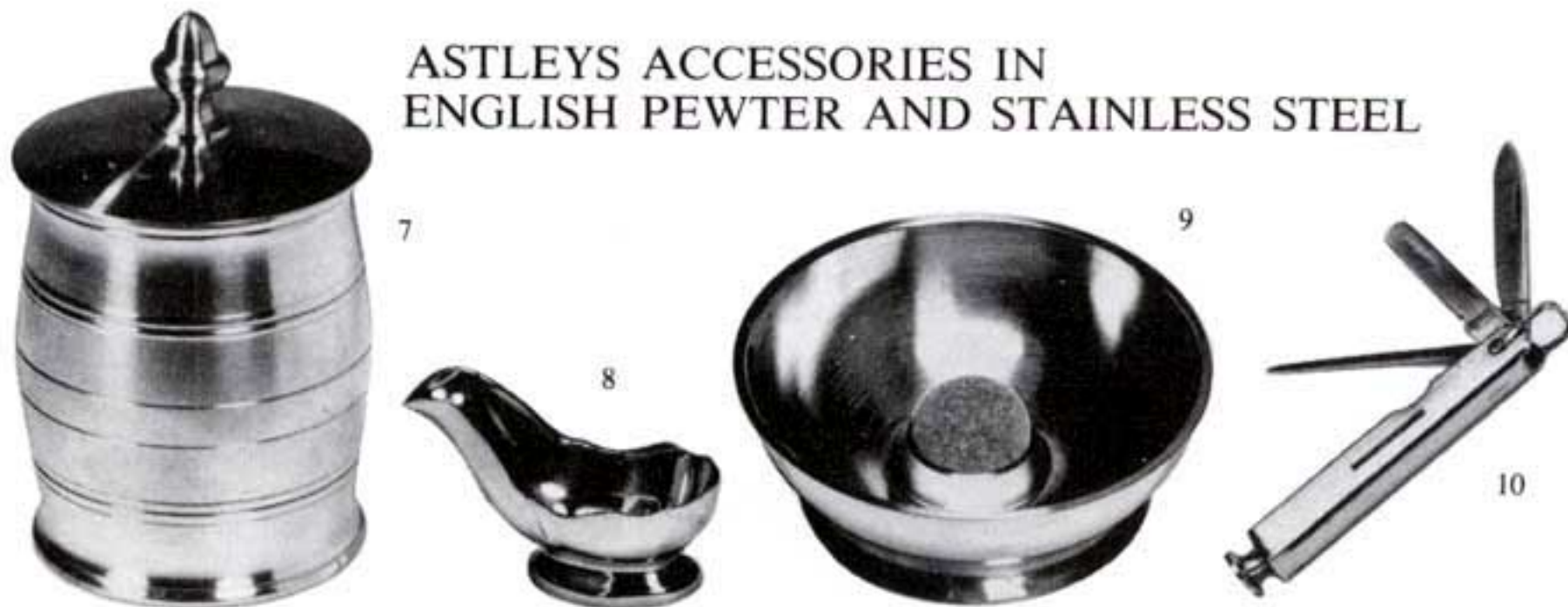


## ASTLEYS OLD ENGLISH PIPE TAMPERS



A set of six brass pipe tampers exquisitely reproduced from 19th Century originals owned by Astleys. Sold in sets or singly—Characters noted in above illustration:—  
1. Nelson 2. Sun King 3. Drake 4. Dr. Stanley 5. Wellington 6. Shakespeare

## ASTLEYS ACCESSORIES IN ENGLISH PEWTER AND STAINLESS STEEL



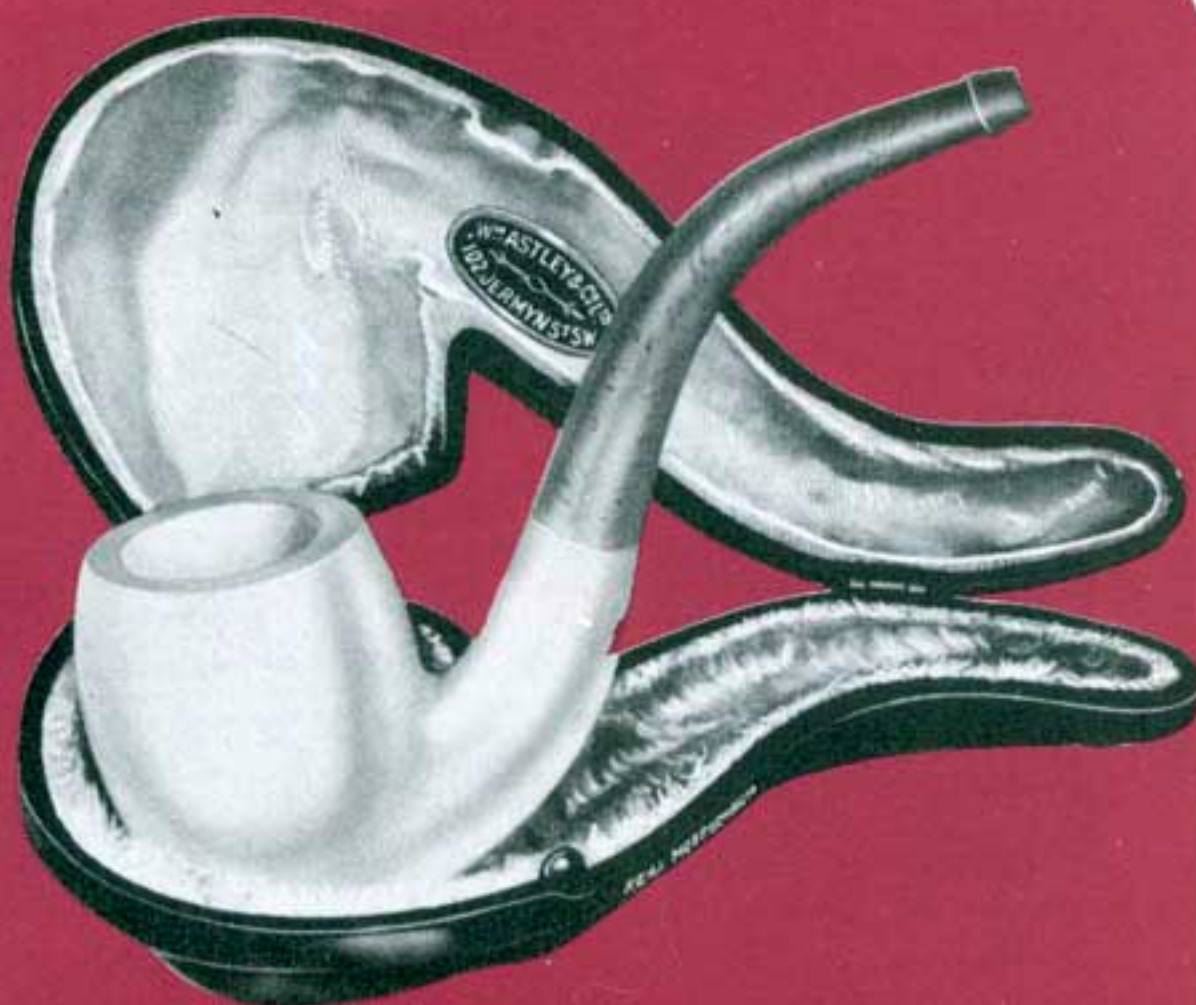
- 7 Pewter Tobacco Barrel—In old English style—with well fitting lid and separate weighted internal “press”—to hold up to 6 ozs.
- 8 Pewter single pipe rest. Attractive and non-tarnishable—Will hold most pipes.
- 9 Solid Pewter “knock knobby” Ashtray—with cork centre for knocking out pipe. In two sizes—5½” and 6½” diameter.
- 10 Smoker’s knife—An all-purpose knife made of finest Sheffield Stainless Steel with four essential tools. Also made in sterling silver with three tools.



## ASTLEYS BLOCK MEERSCHAUM PIPES

Astleys specialise in Meerschaum pipes cut from the finest Block Meerschaum mined in Eskeshir (Turkey), carved in Vienna. A Meerschaum pipe makes a particularly acceptable and original gift. Meerschaum is very light in weight, is essentially a cool smoke and being of a very porous nature colours beautifully.

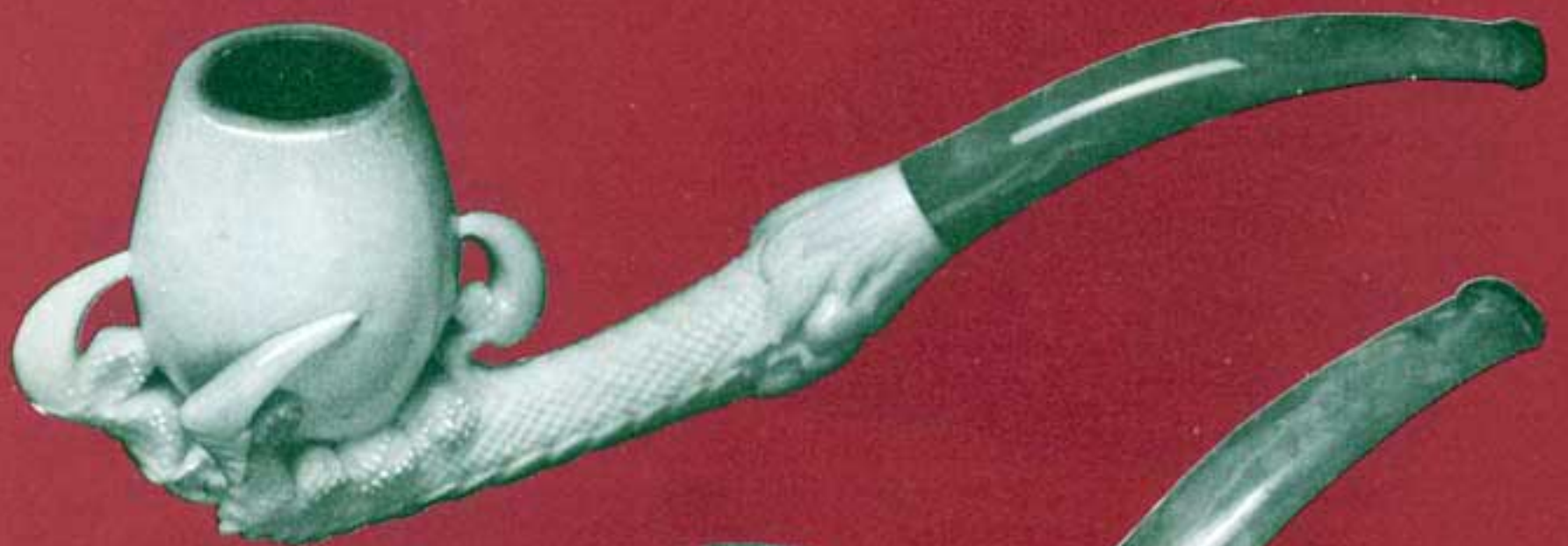
1st Quality supplied in individual case. Vienna made. Cultured Amber Stems. 2nd Quality Turkish made, in case, in medium and small sizes only. (See price list).



## ASTLEYS CALABASH

The pipe for the individualist—No two pipes alike. The Calabash is an ideal reading pipe attractive in shape and is fitted with a removable Meerschaum bowl. The large smoke expansion chamber makes it one of the coolest and sweetest pipes to smoke. It is supplied in two sizes—Large and medium.





## ANTIQUE MEERSCHAUMS

Three basic types of antique meerschaum pipes (silicate of magnesia) – The-Bowl-in-claw, Human heads and Animals. We have a range of beautifully carved pipes for sale (PERSONAL SHOPPERS ONLY). Personal valuations given.





1



2



3



4

## ASTLEY'S SMOKER'S WOODWARE

Ideal functional gifts for pipe  
and cigar smokers.

- 1 and 4 Cigar Humidors—made to finest English Craftsman standards. Available in 3 sizes for 25-50-100 cigars. In solid walnut or mahogany with veneered lids and mahogany in military band style. Rubber seated for air tightness—Removable humidifier in lid to condition cigars—supplied with 2 keys.
2. Walnut circular rack—to hold 8 pipes—Brass engraving plate for initials, etc. in centre—Felt base.
3. Double tiered pipe rack in solid walnut to hold 12 pipes—Felt base. Other sizes and styles available for personal shoppers.



## ASTLEYS TRAVELLING CASES & POUCHES IN LEATHER

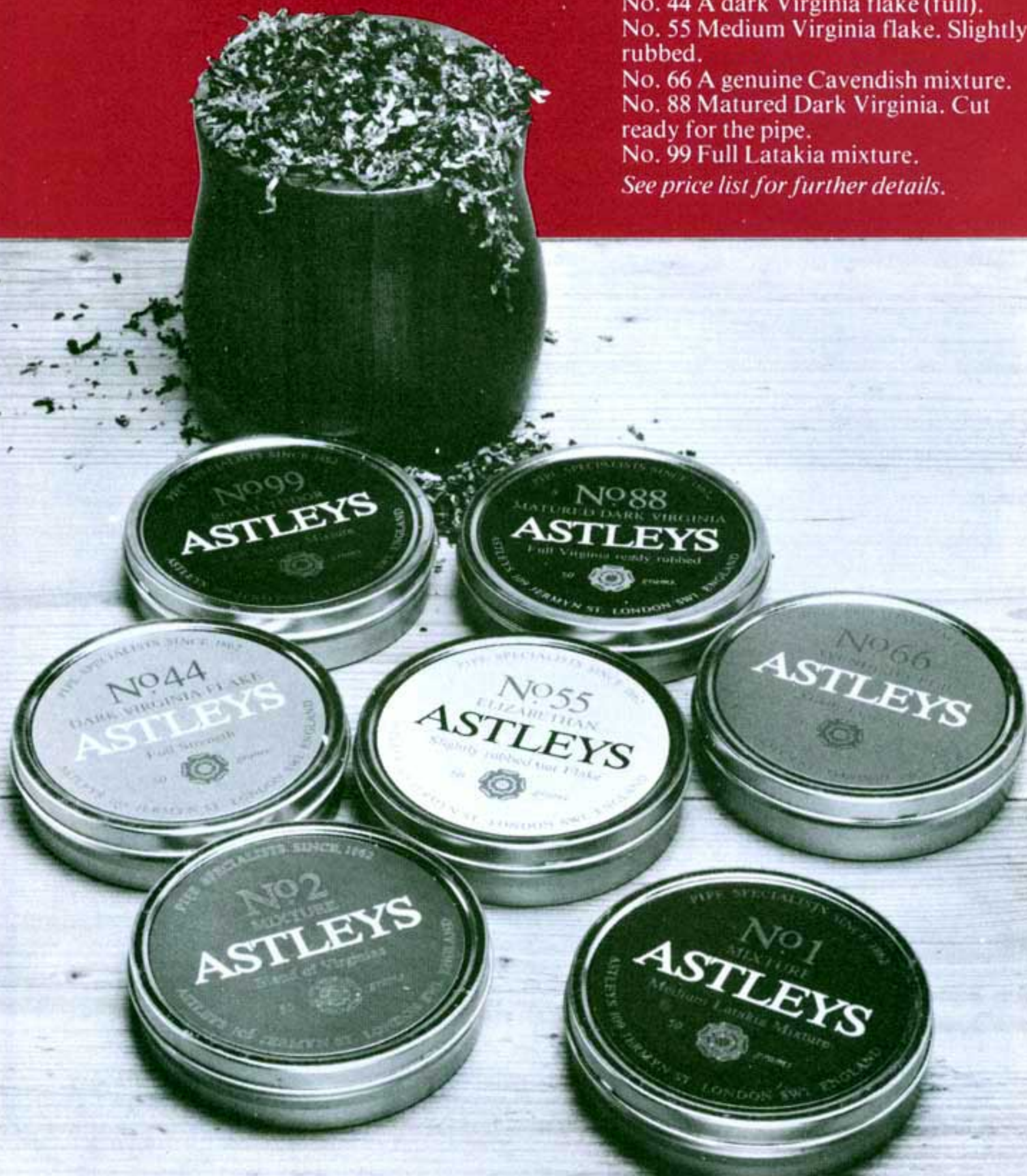
1. The weekend pipe case—To hold 2 pipes, smokers accessories and tobacco.
2. Roll up Tobacco pouch in soft kid—A most practical pouch keeping tobacco in ideal condition—Soft and pliable in the pocket. Brown, Black or Blue.
3. Pipe carrying case in Black pigskin—To hold 4 pipes and accessories with special wrist strap.
4. Pipe pouch in soft Glove kid—Black or brown. Holds pipe in zip compartment also about 1½ ozs tobacco.
5. Pipe case in Black pigskin—Holds 7 pipes with additional space for tobacco, cleaners and smoker's accessories. Handle for carrying.



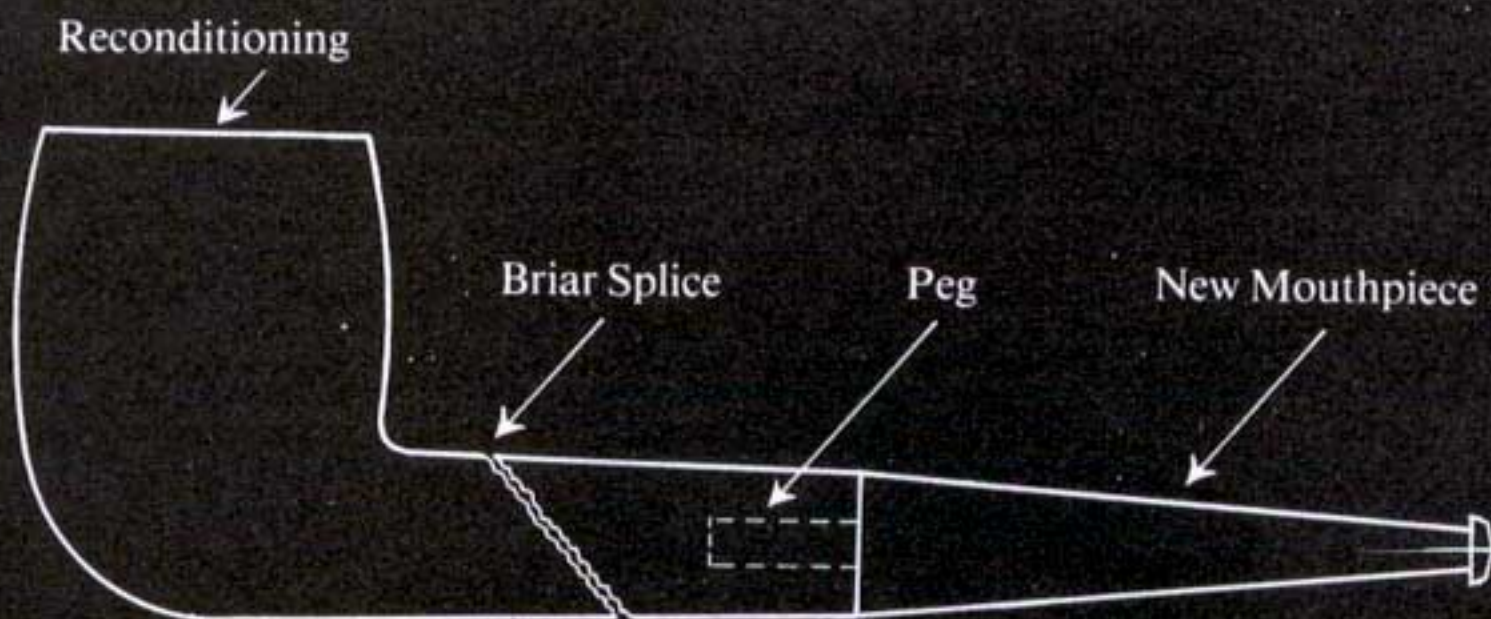


## ASTLEYS FINE PIPE TOBACCOS . . .

No. 1 Medium Latakia mixture.  
No. 2 Virginia Mixture WITHOUT Latakia.  
No. 44 A dark Virginia flake (full).  
No. 55 Medium Virginia flake. Slightly rubbed.  
No. 66 A genuine Cavendish mixture.  
No. 88 Matured Dark Virginia. Cut ready for the pipe.  
No. 99 Full Latakia mixture.  
*See price list for further details.*







## REPAIR SERVICE (Any Make)

Astleys undertake repairs to briar pipes (any make) as shown on the diagram. They also undertake to "recondition" old pipes by scraping and cleaning thoroughly with PURE ALCOHOL. A foul pipe is injurious to health.

**Do not throw a broken pipe away, send it to us for repair, we can do the following:—**

- (a) Fit new mouthpiece (send bowl)
- (b) Fit briar splice (send bowl and mouthpiece)
- (c) Recondition
- (d) Fix new peg (send bowl and mouthpiece)
- (e) Fit special "hard bites" mouthpiece. Twin or Single Round bore.

**We can also carry out a large number of Meerschaum Repairs—ask for details.**

## YOUR ASTLEY BRIAR DESERVES CAREFUL HANDLING HERE ARE A FEW SUGGESTIONS:

To protect the walls of a new bowl against cracking or burning, do not smoke in a high wind, etc., before a protective carbon is formed.

Fill the bowl of a new pipe loosely with tobacco and smoke slowly for the first half dozen or so pipefuls.

To empty the pipe of tobacco ash or dottle, do not hammer bowl on anything hard, this will crack the bowl, split the stem or break the vulcanite. A tap on the palm of the hand should suffice, holding the pipe by the bowl.

Do not dig out the carbon with a pocket knife, but scrape with adjustable reamer, or a Smoker's Knife. Always leave about 1/16th of an inch of carbon in the bowl.